

Biatain® Silicone with 3DFit Technology®

Application Guide

Biatain® Silicone



Biatain[®] Silicone Sacral



Also available as Biatain Silicone Ag Sacral

Preparation

- Cleanse the wound and periwound skin in accordance with local guidelines, e.g. lukewarm water or physiological saline solution.
- Gently dry the periwound skin.
- If any film, cream, ointment or similar product is used, allow the periwound skin to dry before applying the product.

Biatain[®] Silicone Sacral (small)

Step 1: Application



Use protective films to avoid touching adhesive side and ensure aseptic application.

Remove center protective film.



Apply adhesive side towards wound while gently holding buttocks apart for secure placement in gluteal cleft.

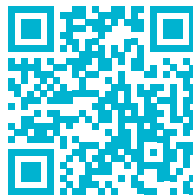


Remove remaining protective films, one at a time, gently securing each side to ensure an even and smooth fit on skin.



Gently run your fingers around border to confirm securement.





[Scan for application video](#)

Step 2: Removal

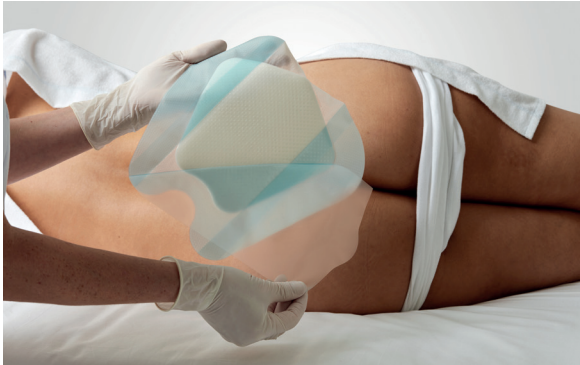


Biatain Silicone should be changed when clinically indicated, when visible signs of exudate approach the edge of the foam or after 7 days.

Gently lift border and slowly pull back dressing until fully removed.

Biatain[®] Silicone Sacral (large)

Step 1: Application



Use protective films to avoid touching adhesive side and ensure aseptic application.

Remove center protective film.



Apply adhesive side towards wound while gently holding buttocks apart for secure placement in gluteal cleft.



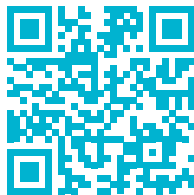
Remove remaining protective films, one at a time, gently securing each side to ensure an even and smooth fit on skin.



Gently run your fingers around border to confirm securement.



Biatain Silicone Sacral can also be applied in both directions.



[Scan for application video](#)

Step 2: Removal



Biatain Silicone should be changed when clinically indicated, when visible signs of exudate approach the edge of the foam or after 7 days.

Gently lift border and slowly pull back dressing until fully removed.

Please refer to the Instructions for Use (IFU) packaged with the product for further information.

Biatain[®] Silicone Multishape



Preparation

- Cleanse the wound and periwound skin in accordance with local guidelines, e.g. lukewarm water or physiological saline solution.
- Gently dry the periwound skin.
- If any film, cream, ointment or similar product is used, allow the periwound skin to dry before applying the product.

Biatain[®] Silicone Multishape

Step 1: Application



Use protective films to avoid touching adhesive side and ensure aseptic application.

Remove center protective film.



Apply adhesive side towards wound.

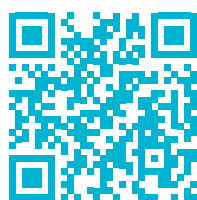


Remove remaining protective films, one at a time, gently securing each side to ensure an even and smooth fit on skin.



Gently run your fingers around border to confirm securement.





[Scan for application video](#)

Step 2: Removal



Biatain Silicone should be changed when clinically indicated, when visible signs of exudate approach the edge of the foam or after 7 days.

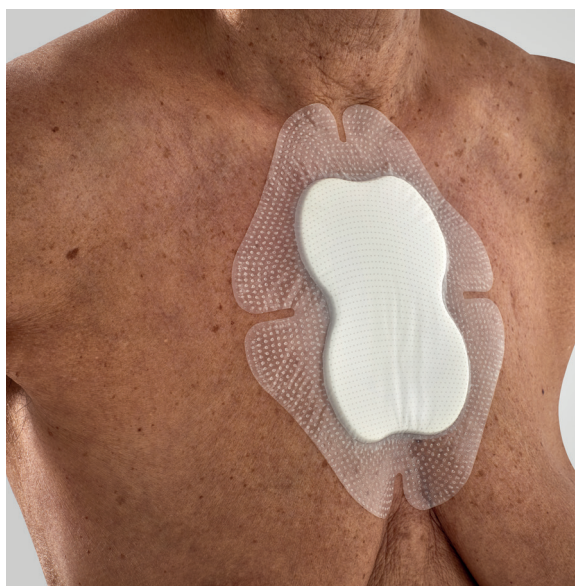
Gently lift border and slowly pull back dressing until fully removed.

Please refer to the Instructions for Use (IFU) packaged with the product for further information.

Biatain[®] Silicone Multishape

A versatile, multi-directional dressing for a variety of body parts of wound types





Biatain® Silicone Heel



Also available as Biatain Silicone Ag Heel

Preparation

- Cleanse the wound and periwound skin in accordance with local guidelines, e.g. lukewarm water or physiological saline solution.
- Gently dry the periwound skin.
- If any film, cream, ointment or similar product is used, allow the periwound skin to dry before applying the product.

Biatain[®] Silicone Heel

Step 1: Application



Use protective films to avoid touching adhesive side and ensure aseptic application.

Remove center protective film.



Apply the adhesive side towards wound.



Remove remaining protective films, one at a time, gently securing each side to ensure an even and smooth fit on skin.

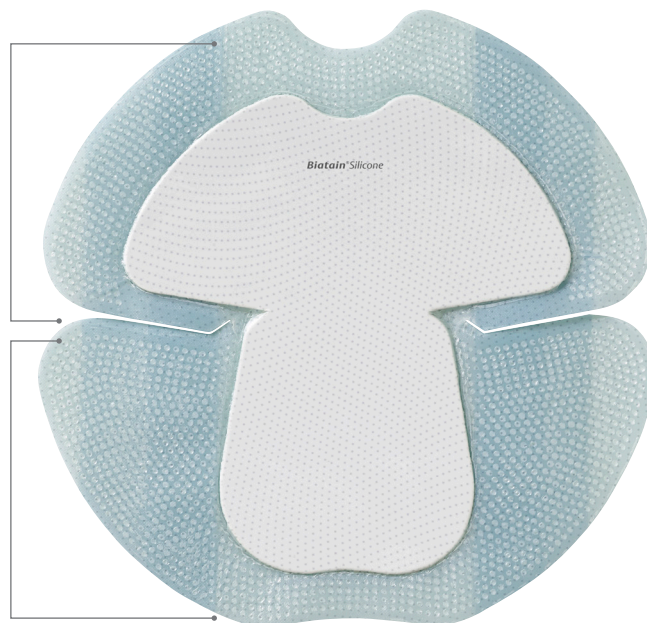


Gently run your fingers around border to confirm securement.



Wraps around
back of heel
(groove designed
to accommodate
Achilles flexion)

Wraps underneath
foot to cover
bottom of heel



[Scan for application video](#)

Step 2: Removal



Biatain Silicone should be changed when clinically indicated, when visible signs of exudate approach the edge of the foam or after 7 days.

Gently lift border and slowly pull back dressing until fully removed.

Please refer to the Instructions for Use (IFU) packaged with the product for further information.

Biatain[®] Silicone

Post-op and Square



Also available as Biatain Silicone Ag

Preparation

- Cleanse the wound and periwound skin in accordance with local guidelines, e.g. lukewarm water or physiological saline solution.
- Gently dry the periwound skin.
- If any film, cream, ointment or similar product is used, allow the periwound skin to dry before applying the product.

Biatain® Silicone Post-op

Step 1: Application



Use protective films to avoid touching adhesive side and ensure aseptic application.

Remove center protective film.



Apply the adhesive side towards wound.

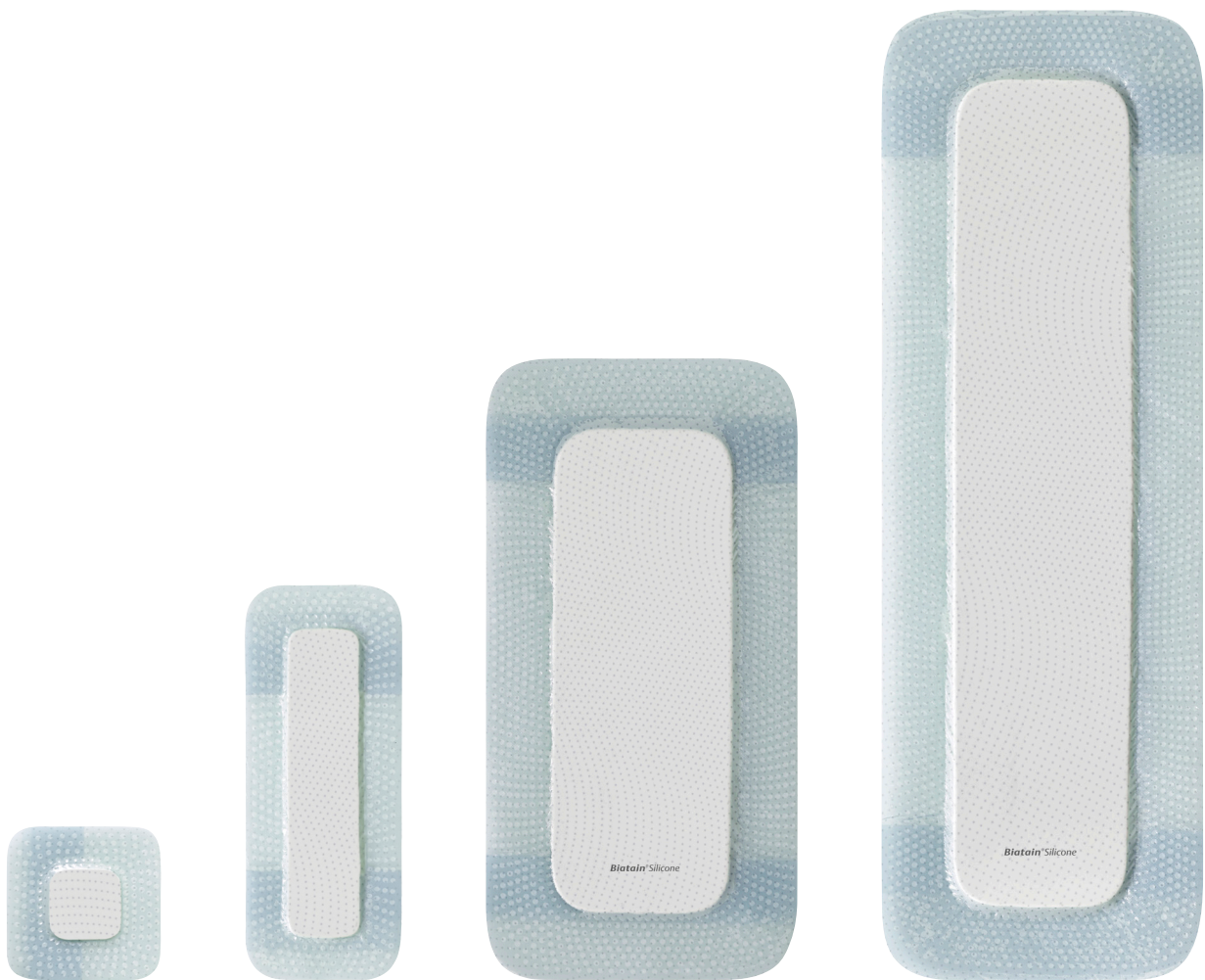


Remove remaining protective films, one at a time, gently securing each side to ensure an even and smooth fit on skin.



Gently run your fingers around border to confirm securement.





Step 2: Removal



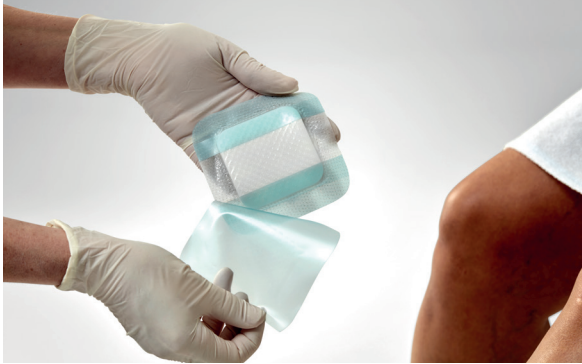
Biatain Silicone should be changed when clinically indicated, when visible signs of exudate approach the edge of the foam or after 7 days.

Gently lift border and slowly pull back dressing until fully removed.

Please refer to the Instructions for Use (IFU) packaged with the product for further information.

Biatain[®] Silicone Square

Step 1: Application



Use protective films to avoid touching adhesive side and ensure aseptic application.

Remove center protective film.



Apply the adhesive side towards wound.



Remove remaining protective films, one at a time, gently securing each side to ensure an even and smooth fit on skin.



Gently run your fingers around border to confirm securement.





[Scan for application video](#)

Step 2: Removal



Biatain Silicone should be changed when clinically indicated, when visible signs of exudate approach the edge of the foam or after 7 days.

Gently lift border and slowly pull back dressing until fully removed.

Biatain® Silicone with 3DFit Technology®

Designed to reduce exudate pooling and thereby the risk of infection and maceration of the wound edge and periwound skin.



**Absorbs
Vertically**



**Conforms to
the wound bed**



**Retains
Exudate**

Biatain® Silicone

Size (cm)	Qty	Code	NHS	PIP
7.5x7.5	10	3434	ELA425	353-3817
10x10	10	3435	ELA451	356-9811
12.5x12.5	10	3436	ELA426	353-3825
15x15	5	3437	ELA427	353-3833
17.5x17.5	5	3438	ELA428	353-3841
14x19.5 multishape	5	33408	ELA1015	404-6066
18x18 heel	5	33406	ELA1013	404-6058
15x19 sacral	5	33404	ELA1014	404-6033
25x25 sacral	5	33405	ELA1012	404-6041
10x20	5	33400	ELA1011	404-6074
10x30	5	33401	ELA1016	404-6082



Biatain® Silicone Ag

Size (cm)	Qty	Code	NHS	PIP
7.5x7.5	5	9636	ELA759	398-8961
10x10	5	9637	ELA760	398-8979
12.5x12.5	5	9638	ELA761	398-8987
15x15	5	9639	ELA762	398-8995
17.5x17.5	5	9640	ELA763	398-9001
18x18 heel	5	39652	ELA1099	408-4638
15x19 sacral	5	39650	ELA1097	408-4612
25x25 sacral	5	39651	ELA1098	408-4620
10x20	5	39644	ELA1100	408-4653
10x30	5	39645	ELA1101	408-4646

